

A Postgraduate Programme for
Healthcare Professionals

Cancer Care in Primary Care

This programme is provided by **iheed** in conjunction with
University College Cork

MSD provided funding to support course development and delivery



Why study an **iheed Postgraduate Programme in Cancer Care?**



Designed specifically to cater for busy health professionals, this 6-week programme is a response to the National Cancer Strategy and combines practical and case-based learning.

The nature of cancer care is changing with an increasing emphasis on prevention, early diagnosis and patient experience during and after treatment. This very innovative and engaging inter-professional programme combines practical and case-based learning delivered on a state of the art online-learning environment. It is designed specifically to cater to the needs of busy healthcare professionals.

It is a **6-week programme**, comprising 26 learning hours and the ideal way to further your knowledge and career in cancer care management. The course is provided by iheed, a leading medical education technology company, in conjunction with the Department of General Practice at **University College Cork (UCC)** and Professor Seamus O'Reilly, Consultant Medical Oncologist.

i Who is the course aimed at?

This course has been developed by expert leaders in the field of cancer care. The programme:

- › Is aimed at healthcare professionals including family physicians, nurses and pharmacists
- › Has been specifically customised to meet the needs of busy health care professionals
- › Is aligned with the National Cancer Strategy



? How will the course be delivered?

This course comprises 6 weeks of online tuition with 1 concluding week of a reflective exercise. This interactive programme will be delivered through a stimulating online environment that is:

- › Facilitated by a team of distinguished experts in cancer care
- › Designed to maximise interaction and associated learning benefits by keeping groups small
- › Tutor-led with peer-to-peer knowledge sharing
- › Flexible and designed to meet the needs of busy healthcare clinicians

? What will you gain from the course?

The course is endorsed by UCC. You will receive CME accreditation by professional bodies for doctors, nurses and pharmacists. As well as professional recognition, participants will have:

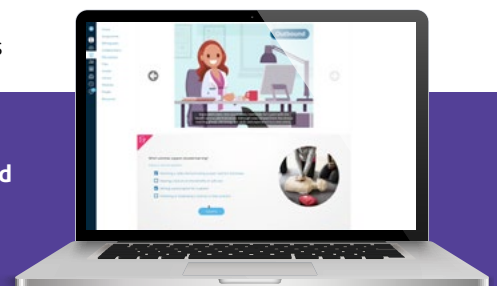
- › An enhanced understanding of cancer care
- › Improved competencies and confidence in the screening diagnosis, and management of cancer
- › Increased understanding of the support and care needs of people with cancer
- › Understanding common side-effects and complications.
- › Strengthened interdisciplinary partnerships



About University College Cork

University College Cork (UCC), a world-class university, was founded in 1845 and combines a rich tradition of teaching, research and scholarship. The Department of General Practice at University College Cork works across a number of schools and departments across the university and conducts research in the areas of prescribing, dementia, multi-morbidity, long term conditions and health care utilisation.

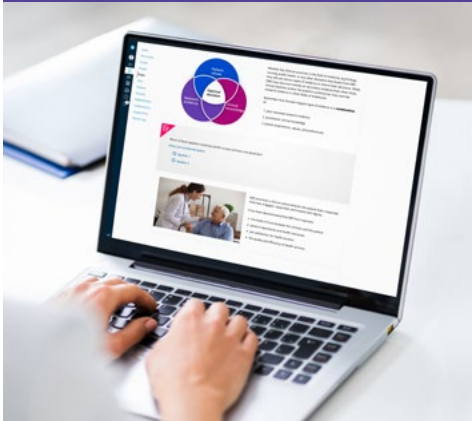
Delivered by leading cancer care experts, through a blended programme of workshops and face-to-face online tutorials, using best practice in medical education.





CPD RECOGNITION:

- > ICGP accredited for 20 CME hours and 4 GMS study days
- > NMBI accredited for 5CEUs
- > IIOF suitable for recording in the IIOF e-portfolio



🕒 Programme Duration

- > 6 weeks

📋 Programme entry requirements

Applicants must:

- > Be a doctor, nurse or pharmacist registered with their respective professional body
- > Be proficient in English
- > Have access to a laptop with a microphone, speakers, webcam and reasonable broadband coverage



Programme Costs

Course origination and delivery costs have been supported by



? What does the programme cover?

WEEK	LEARNING OUTCOMES
1-2 Cancer Risk & Diagnosis	<ul style="list-style-type: none"> > Identify key themes in the National Cancer Strategy and describe ways that they can be delivered in practice > Understand how to identify individuals at risk of cancers common in Ireland and describe prevention initiatives for common cancers (breast, cervical, prostate, colo-rectal) > Evaluate the strengths and limits of current screening programmes and how to increase participation in national programmes > Providing information to patients about the possibility of interval cancers > Demonstrate the ability to describe and evaluate new cancer treatment modalities to patients
3-4 Treatment	<ul style="list-style-type: none"> > Explain the general mechanisms and adverse effects of treatments, (e.g. chemotherapy/ radiotherapy/hormonal therapy/ monoclonal antibodies etc.) > Identify adverse events and appropriate procedures for escalation > Develop approaches to recognise and manage potentially serious symptoms in patients receiving novel cancer therapeutics > Identify sources of guidance for obtaining information on specific treatments and side effects
5-6 Life after Diagnosis	<ul style="list-style-type: none"> > Evaluate and manage risk associated with survivorship, e.g. longterm effects of treatment. other co-morbidities, risk of recurrence etc > Critique the role of the practitioner and patient in developing the skills required for patient self-management and planning care > Demonstrate knowledge of acute care referral, hospice referral and management of palliative care in line with HSE resources > Initiate, guide and record discussions on end of life planning with the patient, in a timely and effective manner



The National Cancer Control Programme welcomes the **iheed** primary care in cancer care course and all efforts to enhance the education and knowledge in Ireland of cancer and of cancer prevention awareness in particular.



Register your interest at
cancercare@iheed.org

Who is iheed?

iheed is leading the way in delivering high-quality **online medical education**. Built by doctors and healthcare professionals, we have **over 30,000 users** across the globe, and believe that effective, accessible medical education is the key to providing better health outcomes worldwide. **iheed** is a division of Cambridge Education Group.

Since 1952, Cambridge Education Group has been delivering the highest quality academic programmes, providing a valuable stepping-stone for thousands of students to progress onto the world's leading universities and maximise their career opportunities.

“ I was delighted to undertake the recent online course in cancer care. This is a very modern version of online learning, and going through the modules is highly informative, but also very engaging. The course is designed for everyone working in primary care. I found it a great chance to stop and think about cancer care as it relates to my own practice.

*Dr. Tony O'Sullivan
GP, Ireland*

“ From areas such as prevention, risk assessment, survivorship and palliative care, my expectations of this course were exceeded beyond measure. It was genuinely fascinating and I learned so much. The delivery of the course was exceptionally straight forward, which is exactly what any busy healthcare professional needs.

*Orla Meenan
Nurse*

Interested?

Get in contact today at
cancercare@iheed.org


Cambridge Education Group

 iheed.org

 facebook.com/iheedonline

 twitter.com/iheed