



Top 10 UK
University



7th in the
Russell Group



Global Academic
Excellence

MASTER OF SCIENCE IN

AI FOR HEALTHCARE PROFESSIONALS

100% Online

Programme delivered in partnership with
iheed and accredited by University of Warwick

iheed
Cambridge Education Group



Programme launch 2026, subject to demand.
Register your interest!

www.iheed.org

About the programme

Artificial intelligence (AI) is already influencing triage, diagnostics, operations, and documentation in healthcare. This MSc programme equips practicing clinicians, healthcare professionals, and health leaders to evaluate, commission, implement, and govern AI systems — with an emphasis on safety, evidence, workflow integration, and equity. Graduates leave able to translate clinical needs into technical requirements, assess model performance and risk, and lead service-level adoption across care settings.

The programme will prepare students to make informed decisions about using and commissioning AI for healthcare, and emphasize how AI tools can be interpreted, validated, and integrated safely into healthcare practice.

Students will gain broad skills in strategic AI planning in healthcare, focusing on patient safety, ethical, cultural, economic, and regulatory contexts.

Who is the programme aimed at?

The target student audience for the MSc in AI for Healthcare Professionals is multidisciplinary. The course will appeal to people who are seeking to deepen their understanding of the application of AI in healthcare, including:

- Clinicians and health professionals across primary, secondary, and community care, including physicians (consultants and trainees), nurses, pharmacists, dietitians, and allied health professionals.
- Healthcare leaders and administrators.
- Service managers with responsibility for digital, quality, or operations.
- Digital/Quality Directors and Integrated Care Systems (ICS) leaders.

What will you gain?

- **Decision authority:** Make defensible choices about AI procurement, deployment, and monitoring.
- **Evaluation skills:** Evaluate studies and interpret calibration, fairness, and utility—not accuracy alone.
- **Governance literacy:** Apply regulatory, safety, and quality frameworks to real systems.

What will you study?

Foundations of AI in Healthcare

1

Foundations of AI for Healthcare Professionals

- Introduction to AI in Healthcare
- Evaluating the Evidence
- Ethical Issues and Legal Considerations
- AI and the Early Patient Journey
- AI and the Later Patient Journey
- The Broader Context of AI in Healthcare

2

Emerging Applications in Health AI

- Using LLMs in Healthcare
- Chatbots
- Medical Scribes
- Synthetic media and trust
- Agentic AI for Healthcare
- The Future of Generative AI in Healthcare

3

AI Model Lifecycle and Governance

- AI Model Process/Lifecycle
- Supervised, Unsupervised, and Reinforcement Learning
- Neural Networks and Deep Learning
- Moving from Models to Systems
- Governance of AI
- Risk, Safety, and Quality

4

Risk Assessment in AI and Health Equity Considerations

- Common Issues (Consent, Confidentiality, Privacy, and Data Security)
- AI use in Paediatrics
- AI for Elder Care
- Using AI with Marginalized Groups
- Accessibility, and AI-assistive Technologies
- The Future of Equitable AI in Healthcare

5

Using AI in Drug Development and Precision Medicine

- Using AI in Clinical Trials
- AI in Drug Development and Repurposing
- AI and Omics
- Use Cases for Precision Medicine
- Ethical, Legal, and Social Implications of Precision Medicine
- Clinical Integration of Precision Medicine

6

Human Factors and Leadership in AI for Healthcare

- Human Factors in AI-enabled Healthcare
- Human vs. Machine Reasoning
- Case Studies: AI Misdiagnosis and Human Oversight Failures
- Leadership in the Age of AI
- Change Management
- Workforce Changes

Put theory into practice and spearhead innovation with your own Professional Project.

The Professional Project module enables you to design and communicate a research-informed piece of work with potential for publication in a medical journal. It bridges theory and practice, allowing you to apply research techniques to issues that matter to you and develop innovative, practical solutions—culminating in a final project that demonstrates your ability to translate theory into real-world impact within a modern healthcare setting.

How will the programme be delivered?

This part-time interactive programme will be provided through a delivery model that blends self-directed learning with faculty-led, team-based learning. Throughout the programme students will engage with:

- Rich, engaging, and interactive learning materials that leverage real-world case studies
- Weekly one-hour online synchronous tutorials with your tutor and fellow students from across the world
- Faculty-moderated discussion forums and weekly activities
- Assessment per module

Students will also have access to a range of journals and tools to support appraisal of the literature in this critical area.

Structure & enrolment

Programme Duration

Postgraduate Certificate

6 months

Postgraduate Diploma

12 months

Master of Science

2 years

Entry Requirements

Hold a 2.2. honours degree (or above) in a medical or life science related field from a UK university or comparable institution.

Have an appropriate standard of proficiency in the English language

What are the opportunities for graduates?



You will be uniquely positioned to enter a cutting-edge and dynamic field that addresses the current challenge of integrating AI into healthcare. You may:

- Expand your current role and contribute to health policy development in the area of AI, define use cases for AI, review AI models, and coordinate on the integration of AI into workflows.
- Continue to pursue further study through PhD programmes related to AI in healthcare (e.g., biomedical informatics, imaging AI), regulatory and quality systems, standards and integration, and evaluation methods.
- Move into specialist areas such as imaging or precision medicine, curate and label data, design studies, and run head-to-head comparisons with clinicians.
- Lead AI selection and implementation in healthcare, defining clinical, safety, governance, and quality requirements.
- Work in clinical trials for AI by designing studies for AI interventions, developing endpoints, ensuring guardrails and monitoring, and analysing impact on process and outcomes.
- Become a product, strategy, and implementation consultant for AI in healthcare working with organisations to define use cases, create AI roadmaps, assess data readiness for AI training, design change management, run pilots, and scale across sites.



Be part of the University of Warwick Community



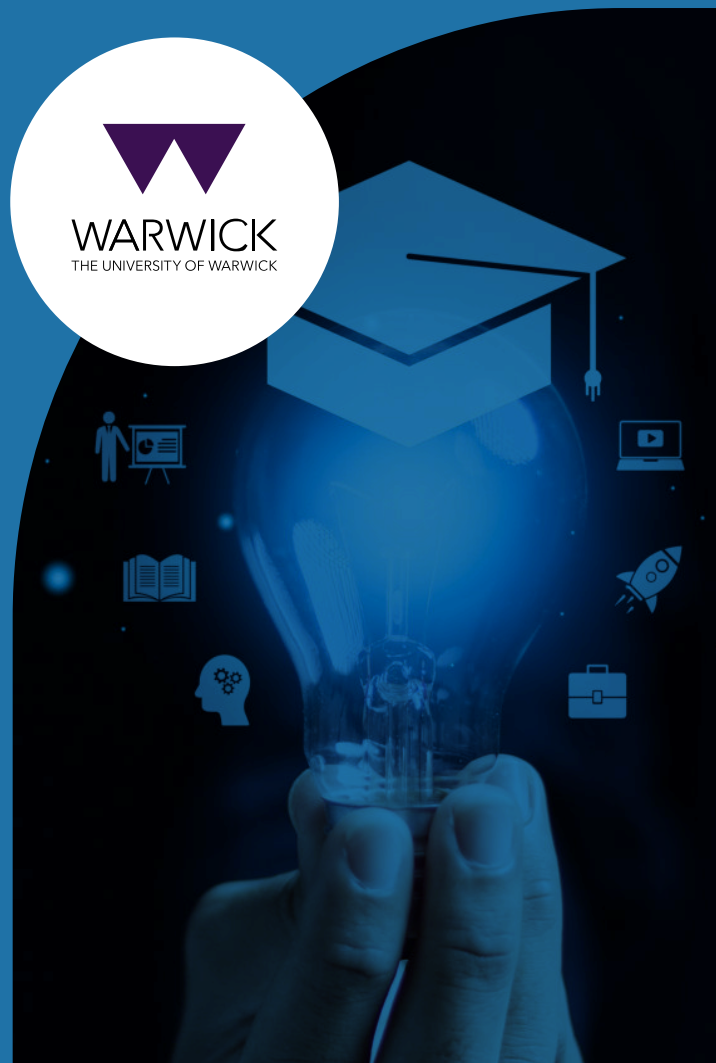
Experience an innovative approach to learning



About University of Warwick

The **University of Warwick** provides transformative learning and research opportunities that spark debate, fuel ambition, and ignite innovation.

Ranked 10th in the United Kingdom and 74th in the world, the University of Warwick is an internationally recognised centre of excellence delivering the highest standards of education, research, information and materials to improve the quality of healthcare globally.



This programme is delivered in partnership with iheed

The partnership between the University of Warwick and iheed brings together Warwick's academic excellence and iheed's unrivalled expertise in online healthcare education.

Warwick's faculty members, as well as experts in the field of AI, contribute their knowledge, research and teaching excellence, ensuring the academic rigour and depth of the programme. Simultaneously, iheed's world-leading

online education capabilities bring learning to life in a stimulating, interactive and user-friendly way, ensuring a rich, engaging and, most importantly, effective learning experience. The result is a programme that delivers the very best of both partners: top-tier academic quality, taught in a way that maximises learning outcomes and provides flexibility for professionals.



Interested in discovering more about iheed online programmes?

Get in touch at aihealthcare@iheed.org

iheed
Cambridge Education Group

Programme delivered in partnership with iheed
and accredited by the University of Warwick

www.iheed.org

